

## SURFACE MOUNT SCHOTTKY BARRIER RECTIFIERS

### SL42B--SL410B

### FEATURES

- Low leakage
- Low forward voltage drop
- High current capability
- For surface mounted applications
- Easily cleaned with Alcohol, Isopropnol and similar solvents



### MECHANICAL DATA

- Case: SMB molded plastic body
- Terminals: Solder plated, solderable per MIL-STD-202, Method 208
- Polarity: Color band denotes cathode end

### Maximum Ratings (@TA = 25°C unless otherwise specified)

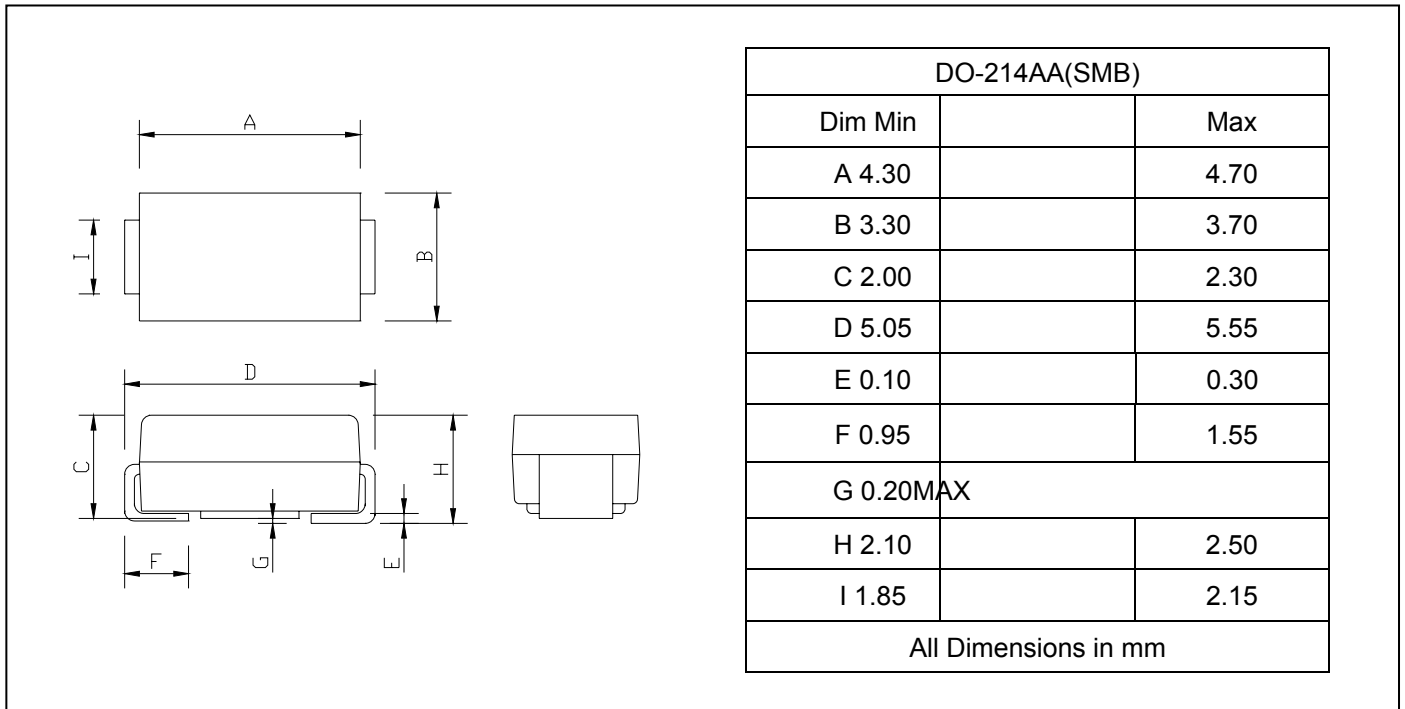
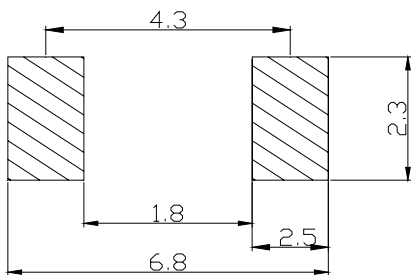
Characteristic	Symbol	SL42B	SL43B	SL44B	SL45B	SL46B	SL48B	SL49B	SL410B	UNITS
Maximum repetitive peak reverse voltage	$V_{RRM}$	20	30	40	50	60	80	90	100	V
Maximum RMS voltage	$V_{RWS}$	14	21	28	35	42	56	63	70	V
Maximum DC blocking voltage	$V_{DC}$	20	30	40	50	60	80	90	100	V
Maximum average forward rectified current at $T_L=90^\circ\text{C}$	$I_{F(AV)}$ 4.0									A
Peak forward surge current 8.3ms single half-sine-wave	$I_{FSM}$ 100									A

### Thermal Characteristics

Characteristic	Symbol	SL42B	SL43B	SL44B	SL45B	SL46B	SL48B	SL49B	SL410B	UNITS
Operating temperature range	$T_J$	-55 ---- +125					-55 ---- +150			°C
Storage temperature range	$T_{STG}$	-55 ---- +150								°C

### Electrical Characteristics (@TA = 25°C unless otherwise specified)

Characteristic	Symbol	SL42B	SL43B	SL44B	SL45B	SL46B	SL48B	SL49B	SL410B	UNITS
Maximum instantaneous forward voltage at $I_{FM}=4.0\text{A}$	$V_F$ 0.45				0.58		0.63			V
Maximum DC reverse current at rated DC blocking voltage $T_J=125^\circ\text{C}$	$I_R$					0.5				mA
						20				

**SURFACE MOUNT SCHOTTKY  
BARRIER RECTIFIERS**
**SL42B--SL410B**
**PACKAGE OUTLINE DIMENSIONS**

**SOLDERING FOOTPRINT**


Unit : mm

**PACKAGE INFORMATION**

Device Package	Shipping
SL42B--SL410B DO -214AA(SMB)	3000/Tape&Reel